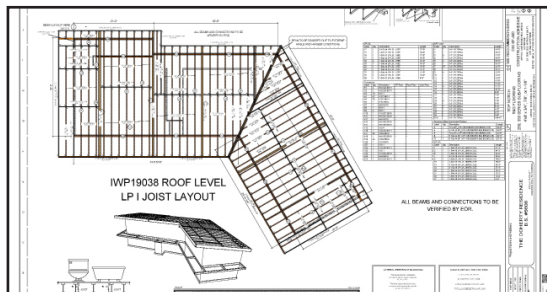


ENGINEERED WOOD PRODUCTS

DESIGN SERVICES

- Complete EWP floor layouts including placement drawings, material lists, and full calculation package.
- Job site ready, cut packs with next day delivery.
- On the ground product to meet any design challenge.
- Roofs
- Header & Porch beam layouts
- Beam sizing
- Arched GluLam schematics

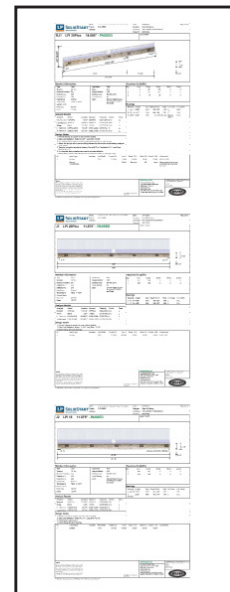


Professional, high quality layouts you can trust!

ROOF LEVEL MAT LIST

ITEM	DESCRIPTION	QTY	UNIT	REMARKS
1	2x12 S-P-F	100	LF	
2	2x12 S-P-F	100	LF	
3	2x12 S-P-F	100	LF	
4	2x12 S-P-F	100	LF	
5	2x12 S-P-F	100	LF	
6	2x12 S-P-F	100	LF	
7	2x12 S-P-F	100	LF	
8	2x12 S-P-F	100	LF	
9	2x12 S-P-F	100	LF	
10	2x12 S-P-F	100	LF	
11	2x12 S-P-F	100	LF	
12	2x12 S-P-F	100	LF	
13	2x12 S-P-F	100	LF	
14	2x12 S-P-F	100	LF	
15	2x12 S-P-F	100	LF	
16	2x12 S-P-F	100	LF	
17	2x12 S-P-F	100	LF	
18	2x12 S-P-F	100	LF	
19	2x12 S-P-F	100	LF	
20	2x12 S-P-F	100	LF	
21	2x12 S-P-F	100	LF	
22	2x12 S-P-F	100	LF	
23	2x12 S-P-F	100	LF	
24	2x12 S-P-F	100	LF	
25	2x12 S-P-F	100	LF	
26	2x12 S-P-F	100	LF	
27	2x12 S-P-F	100	LF	
28	2x12 S-P-F	100	LF	
29	2x12 S-P-F	100	LF	
30	2x12 S-P-F	100	LF	
31	2x12 S-P-F	100	LF	
32	2x12 S-P-F	100	LF	
33	2x12 S-P-F	100	LF	
34	2x12 S-P-F	100	LF	
35	2x12 S-P-F	100	LF	
36	2x12 S-P-F	100	LF	
37	2x12 S-P-F	100	LF	
38	2x12 S-P-F	100	LF	
39	2x12 S-P-F	100	LF	
40	2x12 S-P-F	100	LF	
41	2x12 S-P-F	100	LF	
42	2x12 S-P-F	100	LF	
43	2x12 S-P-F	100	LF	
44	2x12 S-P-F	100	LF	
45	2x12 S-P-F	100	LF	
46	2x12 S-P-F	100	LF	
47	2x12 S-P-F	100	LF	
48	2x12 S-P-F	100	LF	
49	2x12 S-P-F	100	LF	
50	2x12 S-P-F	100	LF	
51	2x12 S-P-F	100	LF	
52	2x12 S-P-F	100	LF	
53	2x12 S-P-F	100	LF	
54	2x12 S-P-F	100	LF	
55	2x12 S-P-F	100	LF	
56	2x12 S-P-F	100	LF	
57	2x12 S-P-F	100	LF	
58	2x12 S-P-F	100	LF	
59	2x12 S-P-F	100	LF	
60	2x12 S-P-F	100	LF	
61	2x12 S-P-F	100	LF	
62	2x12 S-P-F	100	LF	
63	2x12 S-P-F	100	LF	
64	2x12 S-P-F	100	LF	
65	2x12 S-P-F	100	LF	
66	2x12 S-P-F	100	LF	
67	2x12 S-P-F	100	LF	
68	2x12 S-P-F	100	LF	
69	2x12 S-P-F	100	LF	
70	2x12 S-P-F	100	LF	
71	2x12 S-P-F	100	LF	
72	2x12 S-P-F	100	LF	
73	2x12 S-P-F	100	LF	
74	2x12 S-P-F	100	LF	
75	2x12 S-P-F	100	LF	
76	2x12 S-P-F	100	LF	
77	2x12 S-P-F	100	LF	
78	2x12 S-P-F	100	LF	
79	2x12 S-P-F	100	LF	
80	2x12 S-P-F	100	LF	
81	2x12 S-P-F	100	LF	
82	2x12 S-P-F	100	LF	
83	2x12 S-P-F	100	LF	
84	2x12 S-P-F	100	LF	
85	2x12 S-P-F	100	LF	
86	2x12 S-P-F	100	LF	
87	2x12 S-P-F	100	LF	
88	2x12 S-P-F	100	LF	
89	2x12 S-P-F	100	LF	
90	2x12 S-P-F	100	LF	
91	2x12 S-P-F	100	LF	
92	2x12 S-P-F	100	LF	
93	2x12 S-P-F	100	LF	
94	2x12 S-P-F	100	LF	
95	2x12 S-P-F	100	LF	
96	2x12 S-P-F	100	LF	
97	2x12 S-P-F	100	LF	
98	2x12 S-P-F	100	LF	
99	2x12 S-P-F	100	LF	
100	2x12 S-P-F	100	LF	

Easy to read material list to simplify your ordering process.

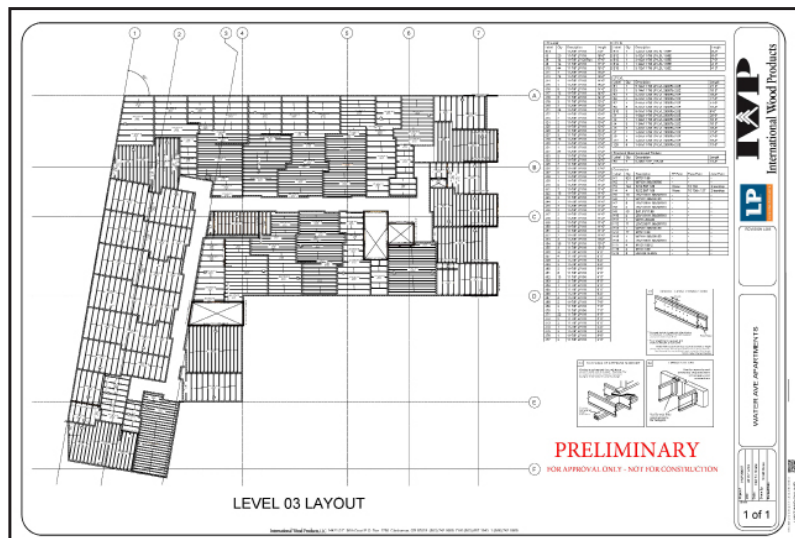


Full calculation provided for all relevant members.

COMMERCIAL & MULTIFAMILY

EWP SERVICES

- Total project EWP take-off.
- Guaranteed maximum price bid.
- Packaging options to fit your needs.
- Direct job site delivery available.
- Open Web Trusses
- Multifamily discounts available!



REFERENCE INFORMATION

I – JOIST CONVERSION TABLE

LP-I COMPARISON

LPI 18	COMPARABLE	TJI 110, BCI-5000, RFPI 20, PWI 20
LPI 20Plus	COMPARABLE	TJI 210, BCI-6000, RFPI 400, PWI 30
LPI 32Plus	COMPARABLE	TJI 230, BCI-6500, RFPI 40, PWI 50
LPI 36	COMPARABLE	TJI 360, BCI-60, RFPI 60S/70, PWI 60/70
LPI 56	COMPARABLE	TJI 560, BCI-90, RFPI 90, PWI 90

EWP GLOSSARY

BIG BEAM – A glulam produced by Rosboro with an LVL top and bottom chord for added strength.

E (MODULUS OF ELASTICITY) – A number that measures a member's resistance to bending when force is applied to it. The higher the number, the more it resists bending.

F_b (MAXIMUM BENDING STRESS) – The maximum amount of bending stress a member can handle before failure. The higher the better.

GLULAM – A beam produced by gluing layers of wood together.

HI-CLEAR – A treatment process developed by PermaPost for glulam beams to makes the beam resistant to decay.

LAYOUT – A set of placement drawings produced by our design techs to be used in construction.

LAYUP (V4, V8) – The directional designation of a beam. A V4 layup, also known as an "unbalanced layup" is single-direction, meaning the beam has a defined top and should only be used in a single span application. A V8 layup, also known as a "balanced layup", has stronger lumber in the top and bottom chord, and thus can be used in multi-span and cantilever applications.

LPI – Louisiana Pacific I joist. This is what we stock.

LSL – Laminated Strand Lumber, a low-cost building material used to make beams, rim, studs, etc.

LVL – Laminated Veneer Lumber, a high capacity building material

MICROLAM – Weyerhaeuser's brand name for LVL.

PARALLAM (PSL) – Short for Parallel Strand Lumber, *Parallam is proprietary to Weyerhaeuser and thus we do not stock a directly comparable product.* A Rosboro Big Beam is generally an acceptable substitute, however a calculation must be provided by the design staff.

RIGIDLAM – Roseburg Forest Product's brand name for LVL.

STRANDGUARD – Weyerhaeuser's brand name for treated LSL sill plate.

TIMBERSTRAND – Weyerhaeuser's brand name for LSL.

CERTIFIED & EXPERIENCED



101 Certificates

Each new member of the team receives 101 training from LP within the first month of employment.



500 Designs

Milestones are encouraged and celebrated during a designer's career in the Department.



Scott Hass
EWP Department Manager



Sean McCartney
EWP Lead Designer



Evan Kelly
EWP Technician



Mathew Perkins
EWP Technician



Dayton Croydan
EWP Technician



Dustin Snow
EWP Technician



Cory Clark
EWP Yard Lead



International Wood Products

Locations:

Clackamas

14421 SE 98th Court
Clackamas, OR 97015
Phone - 503.650.9663
Toll Free: 800.875.9663

Medford

1271 Stowe Avenue
Medford, OR 97501
Phone: 541.779.7717
Toll Free: 800.262.7717

Tumwater

8277 Center St. S.W.
Tumwater, WA 98501
Phone: 360.352.9669
Toll Free: 877.830.9663

www.iwpllc.com